

# FS450 BBQ Trailer with Porch

## Specification

<b>Model:</b>	FS450W
<b>Dimensions:</b>	450*210*230cm
<b>Color:</b>	White
<b>Window:</b>	Flip-out sliding concession windows, with fold down shelf
<b>Material:</b>	Exterior wall: Cold-rolled steel Insulation: 40mm black cotton Interior wall: Stainless steel Floor: Non-slip aluminium checkered floor
<b>Accessory:</b>	Heavy-duty stabilizer legs 88cm safety chain Trailer hitch ball Trailer coupler Heavy-duty stabilizer legs Heavy-duty trailer jack with wheel Door stop
<b>Electrical System:</b>	License light Side lights Tail lights & red reflectors 7 pin trailer connector
<b>Warranty:</b>	One-year warranty for free
<b>Note:</b> The BBQ trailer in a standard model is an empty concession trailer that can be tailored to your needs. Our professional work team will do all the work according to codes and regulations, like wiring and plumbing the BBQ porch trailer and installing the kitchen equipment you want, and make you and your health inspectors satisfied.	

## Details



- Side -



- Porch -



- Side -



- Rear -



- Porch -



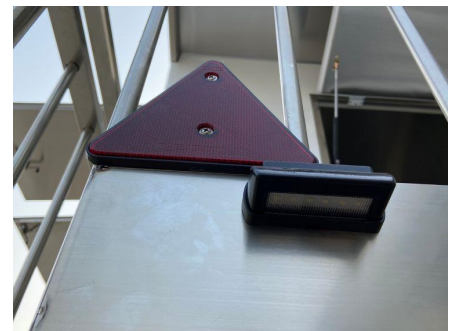
- Window -



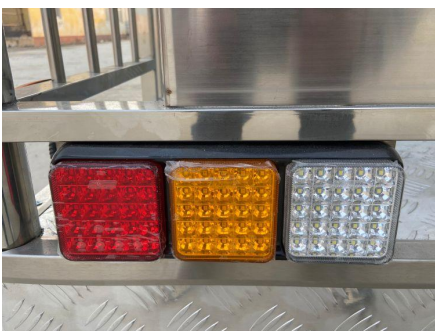
- Tow Bar -



- Porch -



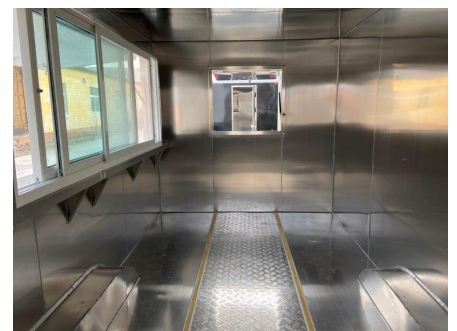
- Red Reflector & License Light -



- Trailer lights -



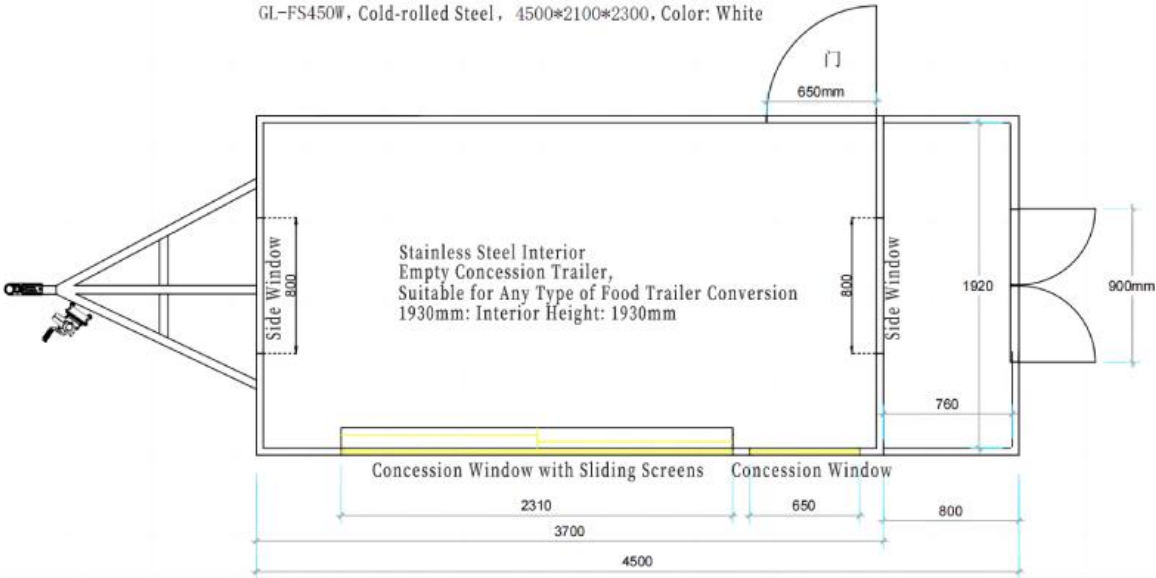
- Window -



- Interior -

# Floor Plan

GL-FS450W, Cold-rolled Steel, 4500\*2100\*2300, Color: White



# Designs

